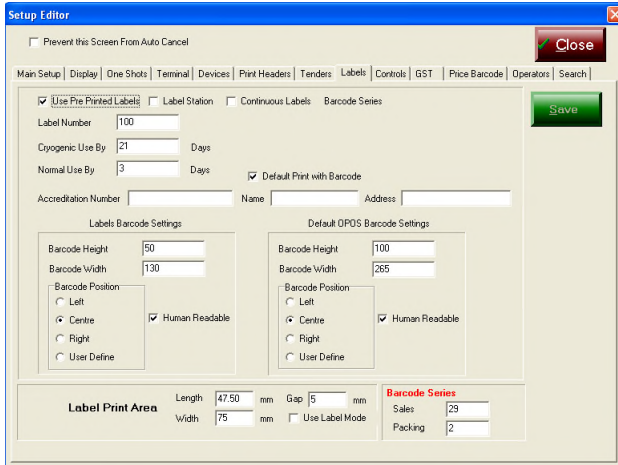


SERVER WEIGH & LABEL – POSPORTAL/IZENPOS

The point of sale configured as a “weighing station” facilitates the serving of customers with the products wrapped or bagged and a label printed by the station placed on the product for scanning at the check-out station.



Depending on printer used labels can be pre-printed (fixed information such as premises name, address, etc.) or standard labels (a choice of some 20 sizes) or continuous label stationary can be used.

Use by dates are computed from packaging date and varying numbers of days are automatically added to the date of packaging to arrive at the Use by date.

Premises Accreditation number can be printed on the labels for traceability.

Name & Address where packaged can be set up alternatively pre printed label stationary can be used.

Barcode

The height, width, positioning (left, centre, right or user defined) can be specified. Barcodes are *price embedded* format.

Barcodes can be printed with or without numbers and letters being visible (human readable). The *server station* supports 24 character barcode generation. EAN UPC is supported.

Barcode series

Differing barcode series can be specified for different purposes. For example a barcode to be generated for *in-house* use may be prefixed with the series 29 and labels that are not to be used within the premises but only at other premises (prepackaged for other shops) can be printed with a *packing* series here shown starting with 2. Different rules for up to 3 price embedded barcode series can be specified simultaneously.

Label Size & format can be specified by the user. Defaults include 2 retail & 2 packing label types. Label combinations may be selected from some 15 alternative formats meeting National Standard S1/0/A in Australia. Other jurisdictions can be accommodated.

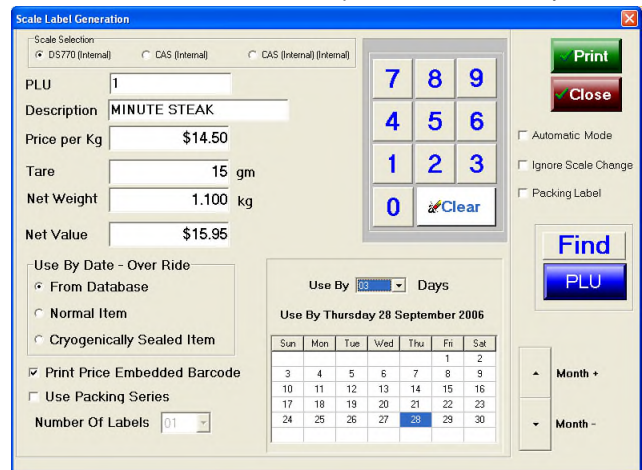
Server Station Screen

Server stations are touch screen based terminals connected to a label printer and a variety of scales.

Three scales can be simultaneously connected.

The 3 scales may be any or combinations of:

- In line weigh only scales. E.g. CAS AP1W or PDII, DIGI, AVERY and others.
- Wrapper and platform scales E.g. DIGI Wedderburn, ISCHIDA, Rollex
- Rail scales E.g. DIGI Wedderburn, ISCHIDA



In the case of the wrappers and rail scales optional software elements are required.

TARES

By item can be specified catering for different bags and containers. Tares are automatically taken from the *steady state* weight from the inline scales.

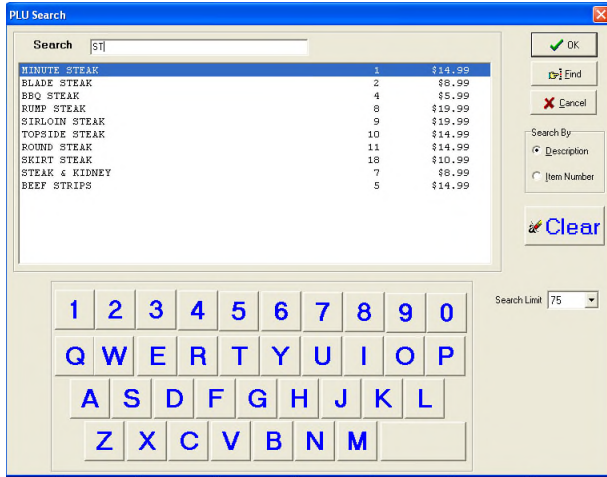
Manual tares can be applied if required.

USE BY DATES or BEST BEFORE

Are automatically calculated based upon operator configuration or choice from the database, manual selection from calendar, normal shelf/fridge life (e.g. 3 days) or as a cryogenically packaged item here shown as 21 days. The use by date is printed on the label as a date.

Automatic Mode this feature allows an operator to specify they are going to weigh several or many of a specific item, e.g. legs of lamb, one selected the operator simply replaces the item on the scale platform and once steady weight is received a label is generated.

FIND a comprehensive search facility to locate the *right* item is provided. Simply enter a few or many letters in the description mode and a list of products to choose from is displayed. Touch the one you want and the appropriate label is printed.



ADDITIONAL FEATURES

- Seamlessly integrates with the POSPORTAL & IZENPOS retail point of sale applications providing *supermarket checkouts*.
- Fully integrated with the MLA AMCCIT retail portal, set up and change items once and the change is at the point of sale and the server weigh & label terminals – no double handling.
- Stock on hand updated by what is labelled.
- Supports Make & Break (Posportal).
- Control barcodes generated to distinguish or prevent non-authorized product usage with the premises.
- Fully compliant with Fair Trading, Weights & Measures and the National Measuring standards under NMI

M7 (POSportal - Approval S585, IZENPOS – Approval S656).

- If scales provide a continual weight output Server Weigh & Label can act as a remote measuring indicator.
- Caters for special pricing, bulk quantity automatic determination by the integrated point of sale.
- Supports 5 selling prices in addition to special, bulk quantity pricing.
- Prints a *packaging label* showing the date the product or carton was packed.
- Fully integrated with the MLA AMCCIT point of sale (POSportal or iZenPos).
- Advertising multimedia customer display the *optional* advertising AMCCIT retail portal module can be used to show with flair, colour & panache specials or items you wish your customers to buy whilst they are being served at the *weigh & label* stations. Much more effective than waiting until the customer is at the checkout. Show stills or flash animated graphics, industry provided promotions or movies on the customer display & continue to comply with regulatory requirements. Reach your customers when they are not being hurried at the checkout!
- Read weights from and produce labels for items placed on inline, rail or platform or wrapper scales.
- CoOL (Country of Origin compliant)
- *Optionally* interface to your automated wrapper (Ischida, Rollex, Digi and others).

SOME USERS OF SERVER WEIGH & LABEL

- The Meat Barn - Warrnambool.
- Sinclair Meats in Ballarat, Victoria.
- Proud Chic Poultry, Chelsea, Victoria.
- Reeves on Campbell, Albany, WA



MC Convergent Stores : Welcome to A

